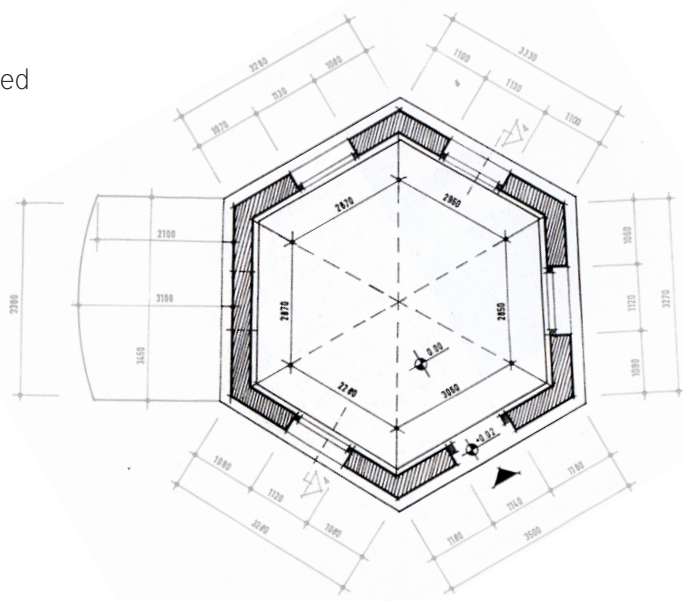
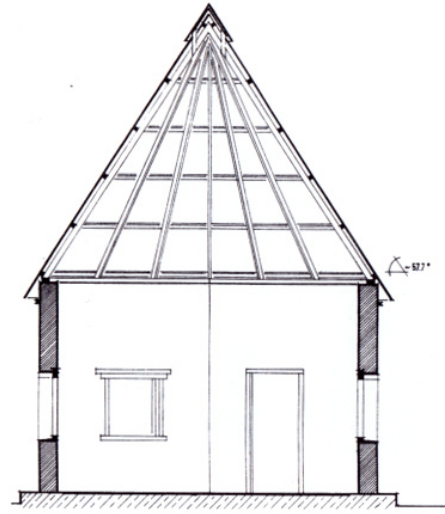




OFF SPACE j.w.d. Opening on the 8th of October 2013



The Hexagonal Building in Francistown is considered a historical building of the Epoch of the British Protectorate yet a neglected space in town. Doctor Morgan built this building in the 1920th in need of a guesthouse. Later it was used as a dispensary. The charming little pavilion has been empty and dirty since many years.

Sketches and first source of information from Hartmut Herold: *Historical Buildings in Botswana*, Johannesburg, South Africa, 2003

Ricarda Mieth  
Czarnikauer Strasse 4, 10439 Berlin  
[www.ricardamieth.de](http://www.ricardamieth.de)



#### Thanks to:

the local artists for collaborating, the entire staff of the Supa-Ngwao Museum Centre for its support, the Berlin Senate Cultural Affairs Department for covering the travel expenses, the Botswana National Museum and Botswana Railways for permission to let anything happen at the historical building, Buy 'n Build for the pallets, Francistown City Council for the drums and Goergia Rakelmann for the catering.



OFF SPACE j.w.d

Ricarda Mieth



Berlin galleries, conceived as “Off Spaces” are open spaces, places where anything can happen: meetings, ideas, collaborations and innovation. In Berlin, the non-commercial, non-publicly funded exhibition spaces for art are plentiful and constitute an important part of the art scene.

**j.w.d.** [jotve'de:] is Berlin slang, an acronym for a place miles from anywhere, since this OFF SPACE is 8,316 kilometres apart from Berlin, as the crow flies.



**OFF SPACE j.w.d.**  
**(transferred from Berlin to Francistown)**  
**temporary Installation at the Hexagonal Building**  
**Francistown, Botswana 2013**



The Supa-Ngwao Museum Centre Francistown had introduced Berlin-based artist Ricarda Mieth and initiated an open discussion with local artists about the potentials of an alternative artist-run artspace in Francistown as a local platform dedicated to contemporary art.

Ricarda Mieth occupied the Hexagonal Building near the Museum Centre and turned this charming historical ruin together with local artists into an experimental OFF SPACE.

The neglected space already appeared to be a somehow forgotten pavilion. Rebuilding a veranda out of 27 old pallets all around the building physically set up the platform for this OFF SPACE.





**OFF SPACE j.w.d.**  
 (transferred from Berlin to Francistown)  
 temporary Installation at the Hexagonal Building  
 Francistown, Botswana 2013

*Three sheets to the wind*  
 A sound installation made of found material



Collaboration between Ricarda Mieth from Berlin  
 and Sandy Green, Crawford Mandumbwa, Katlaareng  
 Mogale, Michael Mooki, Cyril Ndolo and Galethabe  
 Olemogeng from Francistown

3 columns out of drums welded together  
 2 triangular steel frames, a tube, strings and  
 diverse soundmaterials inside the drums,  
 3 iron sheets outside the hexagonal building







Off Spaces echo artistic freedom outside of institutional restraints and market forces. Over a one-week working process the German artist Ricarda Mieth and the local artists Sandy Green, Crawford Mandumbwa, Katlaareng Mogale, Michael Mooki, Cyril Ndolo and Galethabe Olemogeng got together and spent their time, curiosity and manpower to develop a new situation within the dilapidated historical building.

**OFF SPACE j.w.d.**  
**(transferred from Berlin to Francistown)**  
**temporary Installation at the Hexagonal Building**  
**Francistown, Botswana 2013**

A local platform dedicated to contemporary art in public space

